

Thomsen

**THOMSEN ICE EDGER
ILLUSTRATED PARTS MANUAL**

Ice Edgers

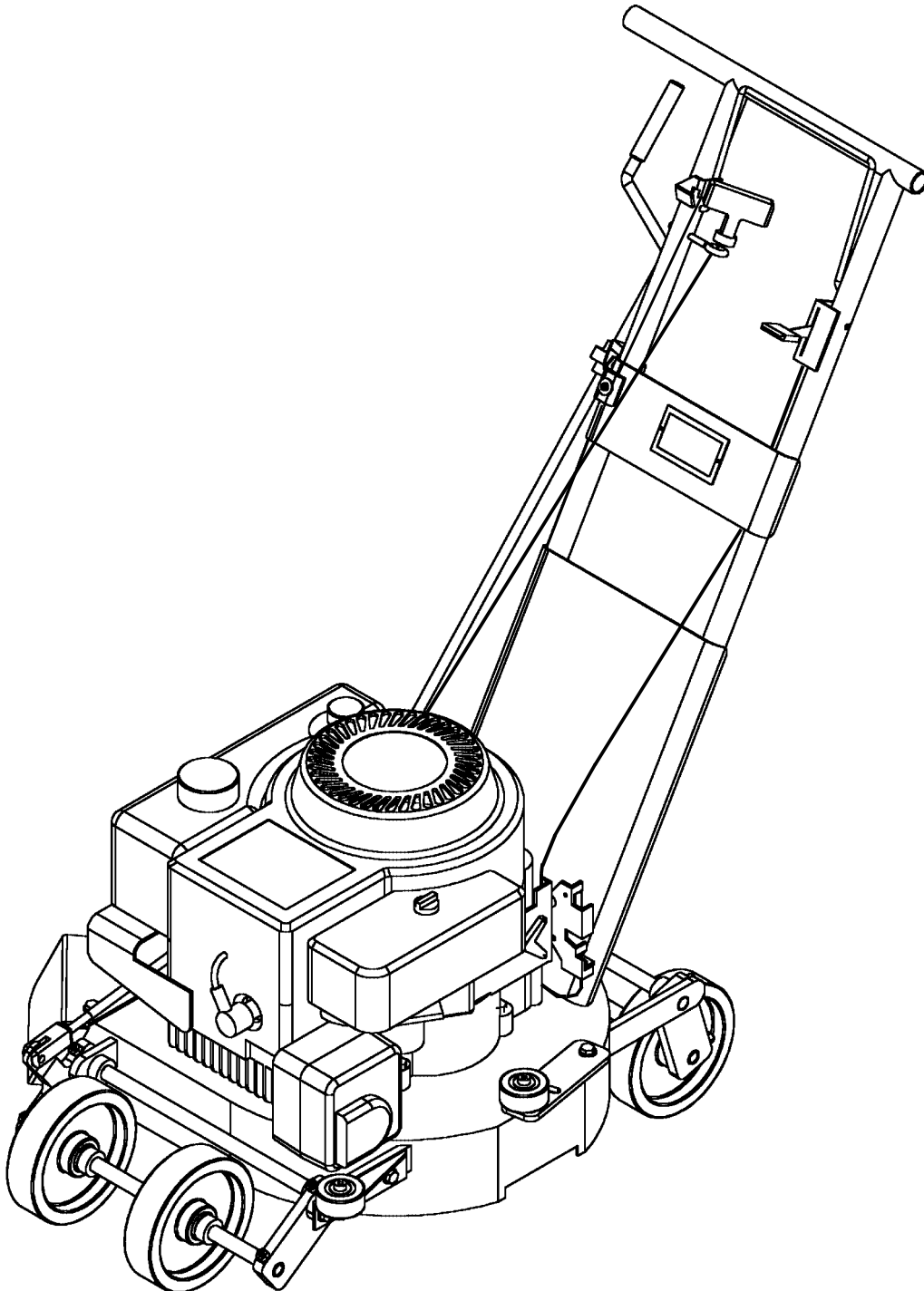
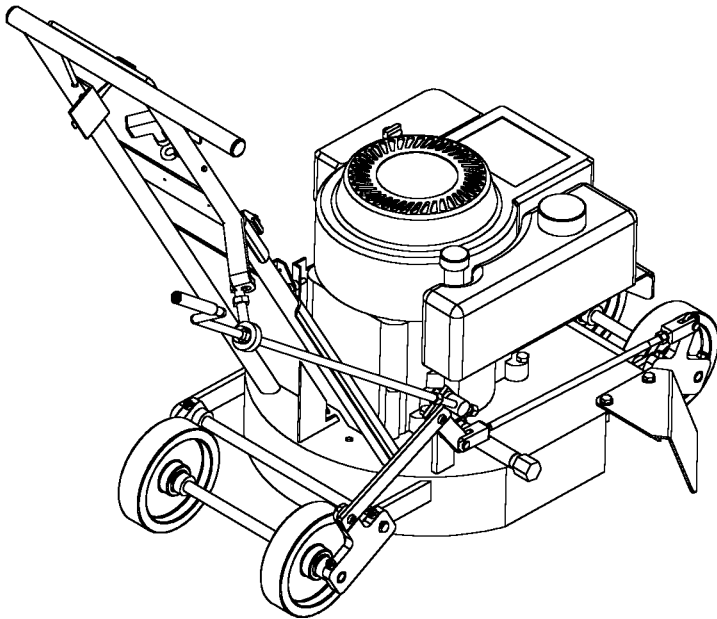
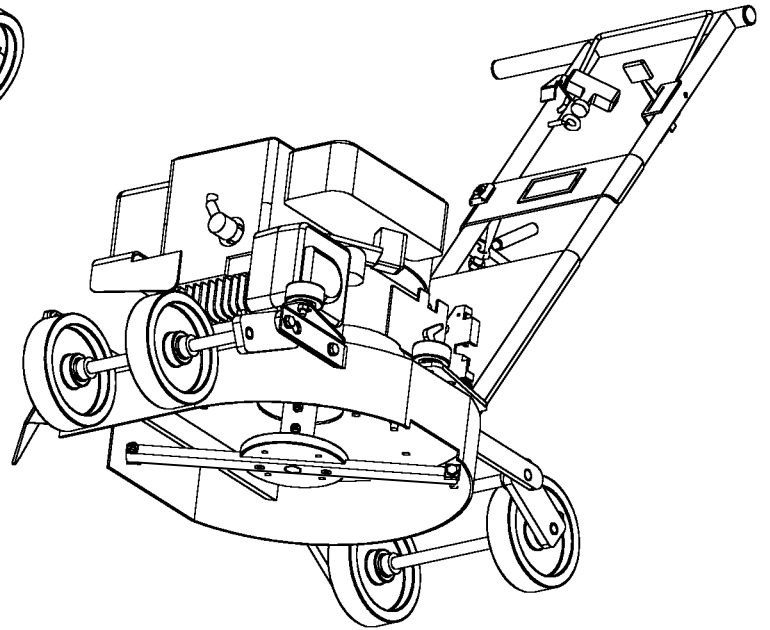
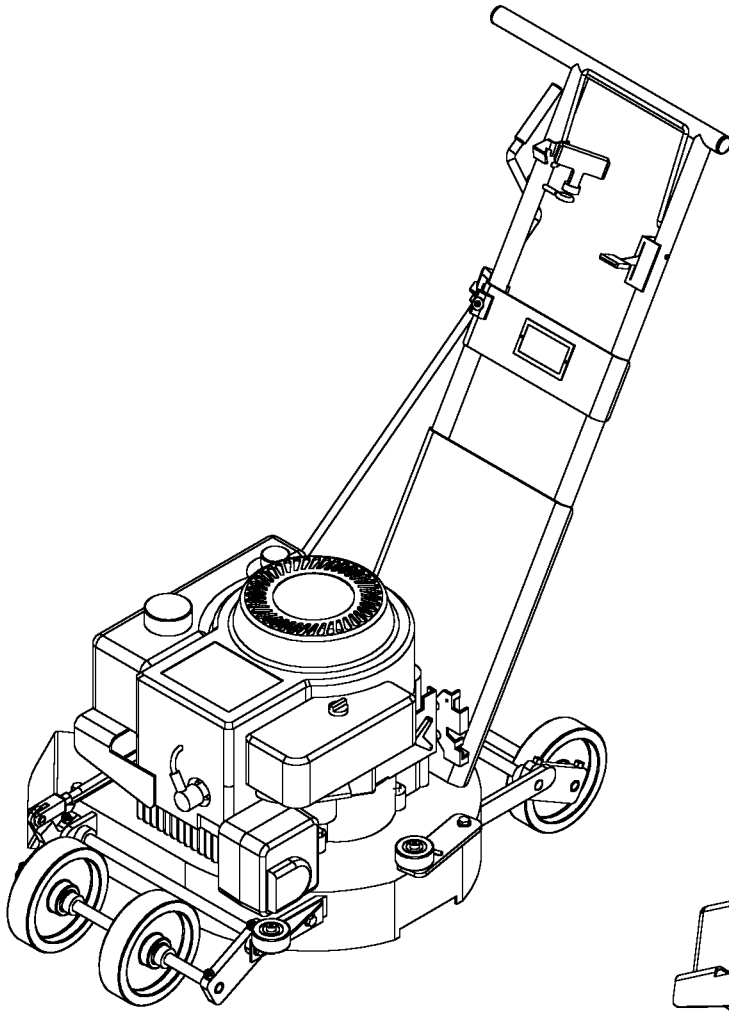


Table of Contents

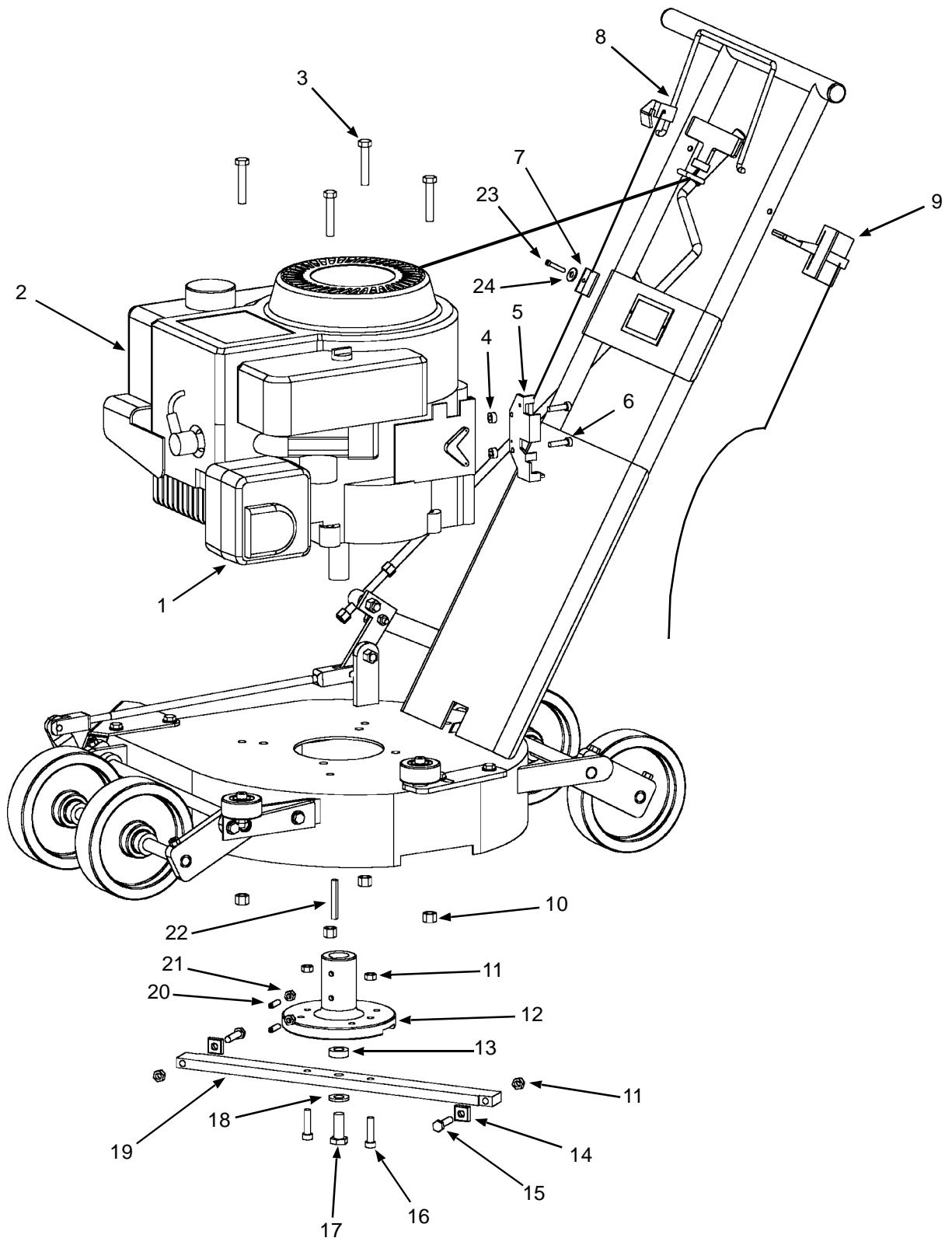
| | |
|--|----|
| Ice Edger Assembly Illustrations..... | 2 |
| Motor and Cutter Bar Assemblies | 3 |
| Front Axles and Crank Assemblies | 5 |
| Rear Axles Assembly | 7 |
| Propane Ice Edger Assembly | 9 |
| Electric Start Assembly | 11 |
| Electric Ice Edger Assembly | 13 |
| Cutter Disc Assembly..... | 15 |

Thomsen Ice Edger Assembly Illustrations



| Item No. | Part No. | Description | No. Req'd |
|----------|-----------|---------------------------------------|-----------|
| 1 | 18-139 | Exhaust Deflector | 1 |
| 2 | 18-133 | 10.5 HP Briggs & Stratton Engine..... | 1 |
| 3 | 31-1824 | HX Hex Screw | 4 |
| 4 | 18-135 | Engine Spacer | 2 |
| 5 | 18-137 | Engine Shut-down Mechanism | 1 |
| 6 | 8-2412RH | Screw | 2 |
| 7 | 18-122 | Ignition Shut-down Cable | 1 |
| 8 | 18-120 | Ignition Shut-down Lever | 1 |
| 9 | 18-124 | Throttle..... | 1 |
| 10 | 31-18ESNA | Nut | 4 |
| 11 | 31-24ESNA | ESNA Nut | 4 |
| 12 | 18-115 | Hub..... | 1 |
| 13 | 90-192 | Hub/ Bar Spacer | 1 |
| 14 | 18-118 | Carbide Cutter (Square) | 2 |
| 15 | 31-2428HX | Hex Screw | 2 |
| 16 | 31-2416SC | Socket Cap Screw | 2 |
| 17 | 43-2020HX | Hub Mt Screw | 1 |
| 18 | 43-43IL | Lock Washer | 1 |
| 19 | 18-117 | Cutter Bar..... | 1 |
| 20 | 25-2808SS | Set Screw | 2 |
| 21 | 25-28JN | Hex Nut..... | 2 |
| 22 | 18-116A | Key | 1 |
| 23 | 25-2012BH | Socket Cap Screw | 1 |
| 24 | 25-25CW | Washer..... | 1 |

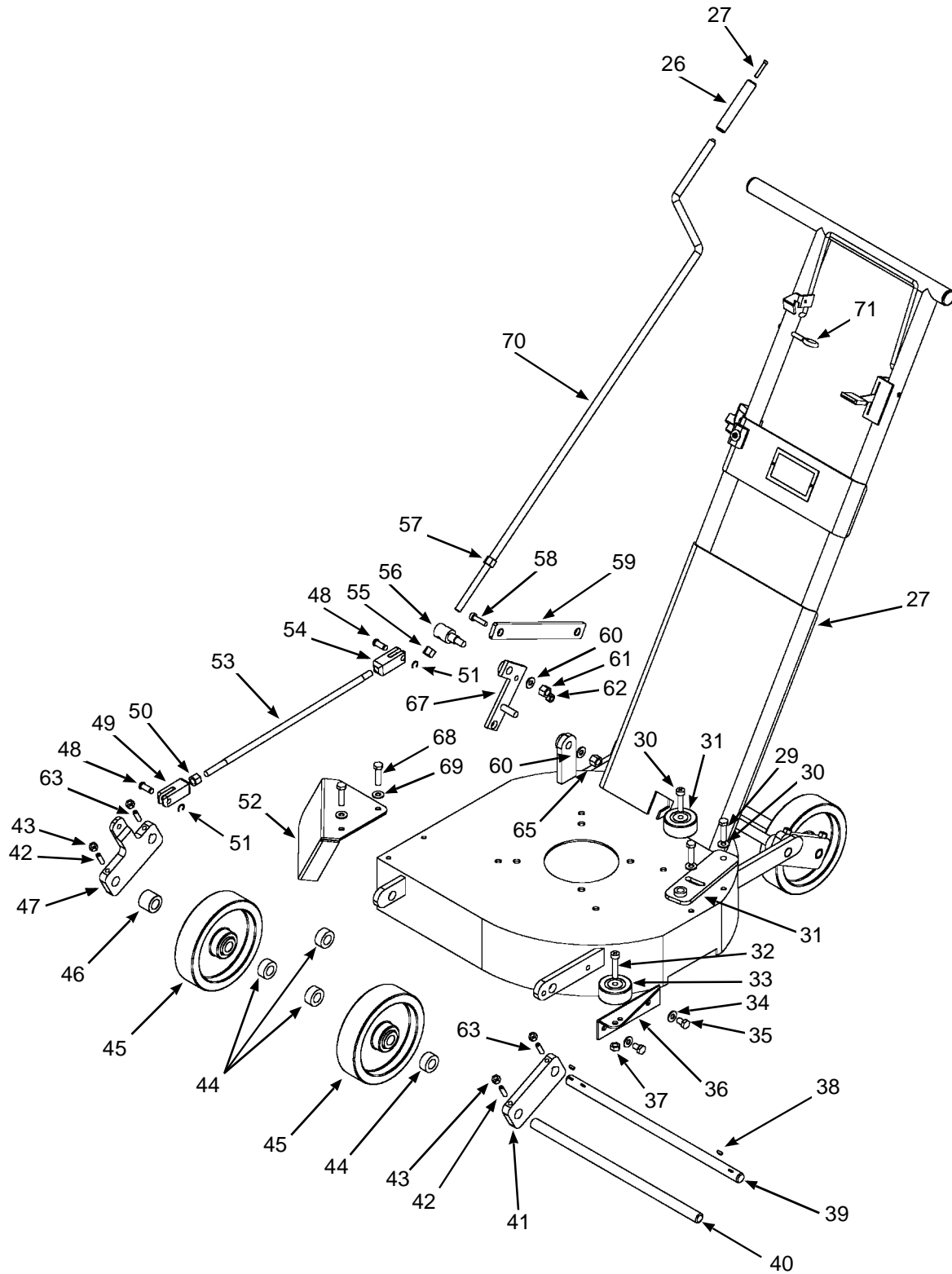
Thomsen Ice Edger Motor and Cutter Bar Assemblies



Use only genuine **Thomsen** replacement parts

| Item No. | Part No. | Description | No. Req'd |
|----------|-----------|--------------------------------------|-----------|
| 26 | 18-125A | Adjusting Crank Knob 7/16" | 1 |
| | 18-125 | Adjusting Crank Knob 3/8" (OBS) | |
| 27 | 8-3208BH | Button Hd Screw | 1 |
| 28 | 18-101 | Base | 1 |
| 29 | 31-1812HX | Hex Screw | 2 |
| 30 | 31-31CW | Washer | 4 |
| 31 | 18-142 | Adjustable Guide Wheel Carrier | 1 |
| 32 | 37-3116SB | Shoulder Bolt | 2 |
| 33 | 18-144 | Guide Wheel | 2 |
| 34 | 31-31IL | Lock Washer | 2 |
| 35 | 31-1808HX | Hex Screw | 2 |
| 36 | 18-143 | Fixed Guide Wheel Carrier | 1 |
| 37 | 31-18ESNA | Nut | 1 |
| 38 | 7-384 | Woodruff Key | 2 |
| 39 | 18-102 | Pivot Shaft (Front & Rear) | 1 |
| 40 | 18-106 | Wheel Shaft (Front & Rear) | 1 |
| 41 | 18-104 | Left Shaft Bracket | 1 |
| 42 | 25-2014SS | Set Screw | 2 |
| 43 | 25-20JN | Jam Nut | 4 |
| 44 | 18-180 | Set Collar | 4 |
| 45 | 18-113 | Wheel | 2 |
| 46 | 18-119 | Wheel Spacer | 1 |
| 47 | 18-105 | Right Shaft Bracket | 1 |
| 48 | 18-107-02 | Clevis Pin Special | 2 |
| 49 | 18-107 | Turnbuckle (Front) | 1 |
| | 18-107A | Turnbuckle (OBS) | |
| 50 | 37-16JN | Jam Nut | 1 |
| 51 | 5133-31 | Keeper | 2 |
| 52 | 18-129 | Snow Deflector | 1 |
| 53 | 18-108 | Turnbuckle Shaft | 1 |
| 54 | 18-109 | Turnbuckle (Rear) | 1 |
| 55 | 43-14ESNA | Nut | 1 |
| 56 | 18-112A | Pivot Stud | 1 |
| 57 | 43-14JN | Jam Nut | 1 |
| 58 | 31-2508SB | Shoulder Bolt | 1 |
| 59 | 18-111 | Link-Adjusting | 1 |
| 60 | 37-37CW | Washer | 1 |
| 61 | 37-16ESNA | Nut | 1 |
| 62 | 25-20ESNA | Nut | 1 |
| 63 | 25-2012SS | Set Screw | 2 |
| 65 | 37-16ESNA | Nut | 1 |
| 67 | 18-110 | Linkage Lever | 1 |
| 68 | 25-2012HX | MT Screw | 2 |
| 69 | 25-25IL | Lock Washer | 2 |
| 70 | 18-126A | Adjusting Crank 7/16" | 1 |
| 71 | 18-103 | Eye Bolt (Pull Cord) | 1 |

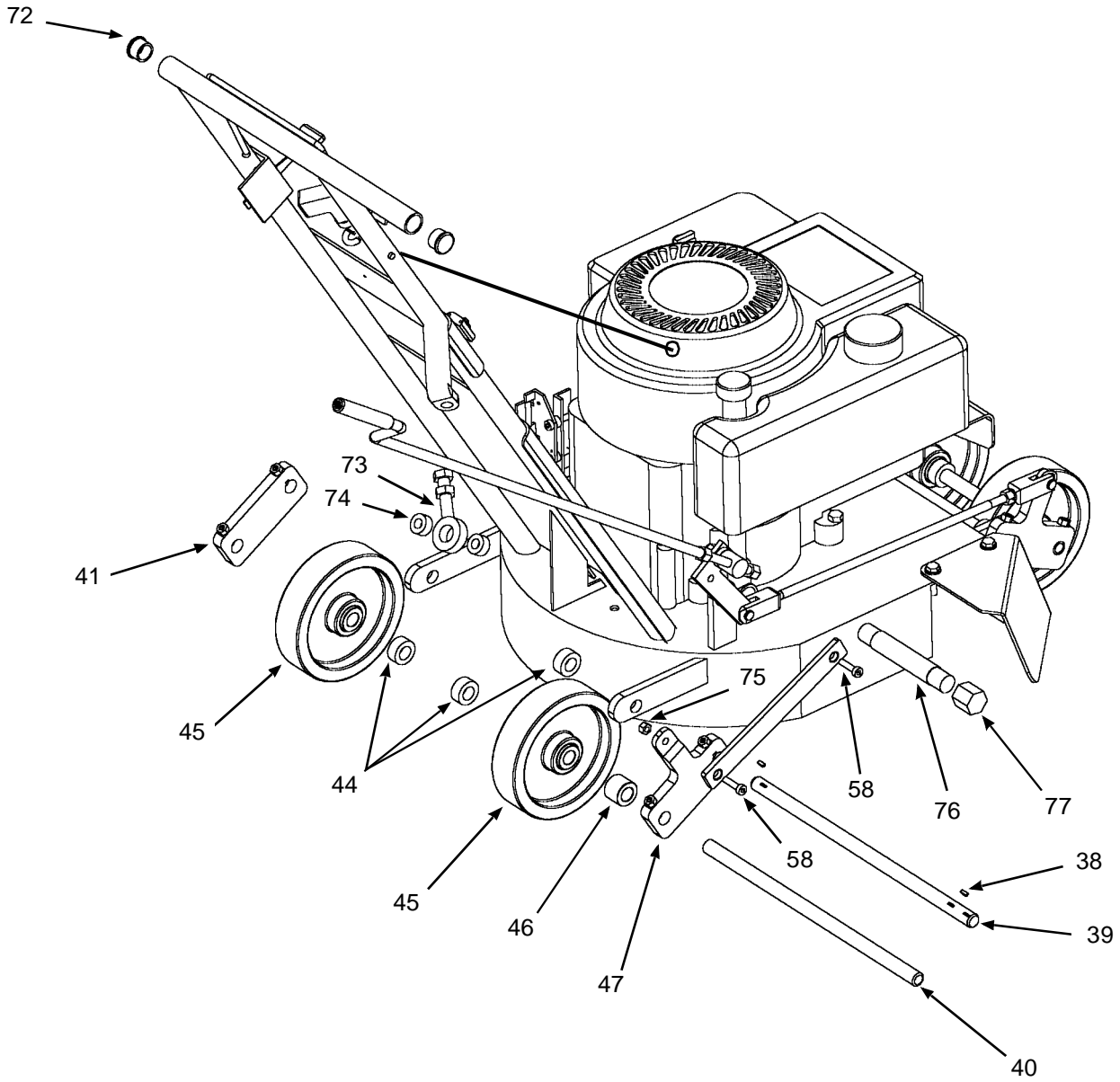
Thomsen Ice Edger Front Axles and Crank Assemblies



Use only genuine **Thomsen** replacement parts

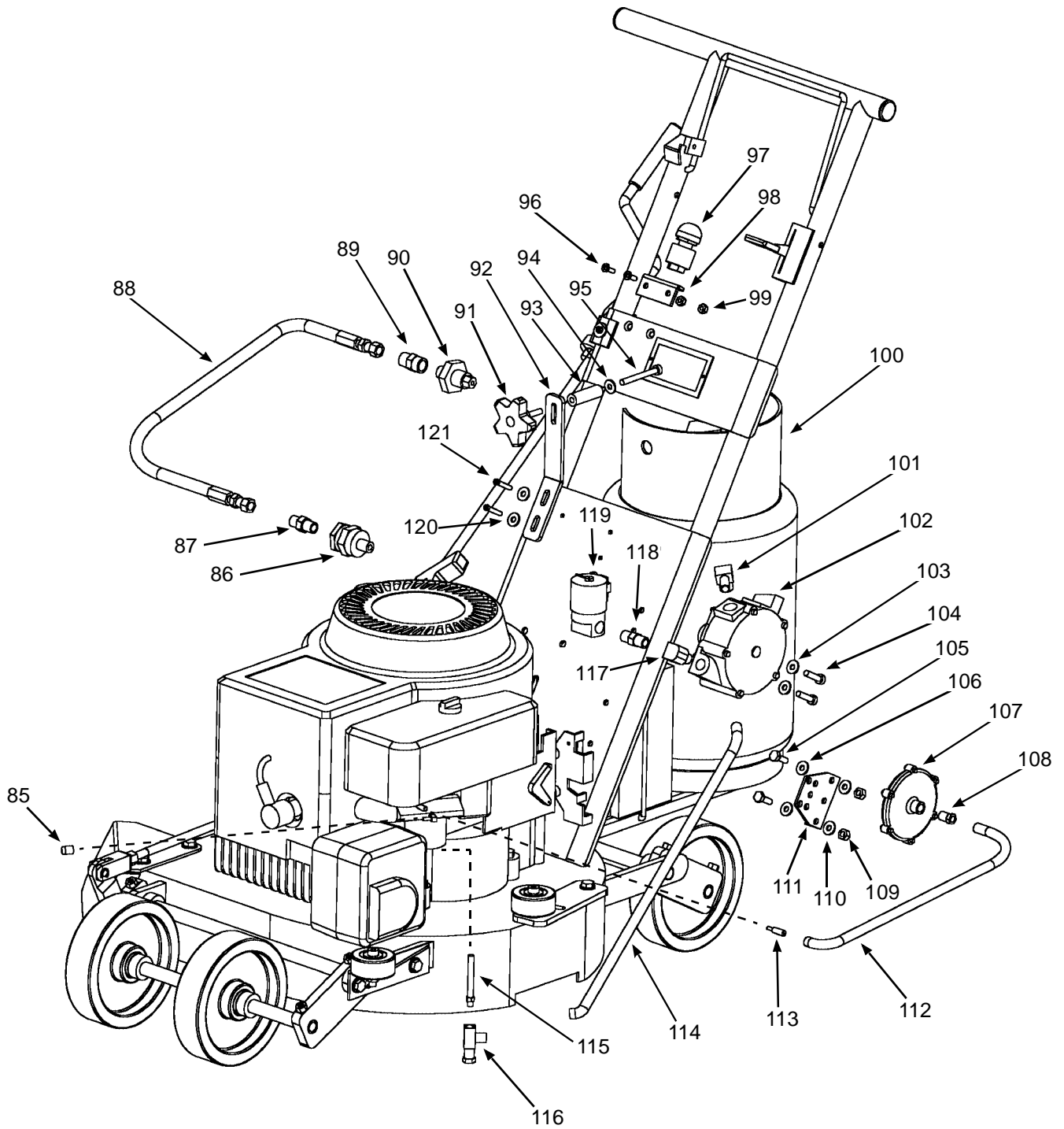
| Item No. | Part No. | Description | No. Req'd |
|----------|-----------|---------------------------------|-----------|
| 38 | 7-384 | Woodruff Key | 2 |
| 39 | 18-102 | Front and Rear Pivot Shaft..... | 1 |
| 40 | 18-106 | Wheel Shaft (Front & Rear)..... | 1 |
| 41 | 18-104 | Left Shaft Bracket | 1 |
| 44 | 18-180 | Set Collar | 3 |
| 45 | 18-113 | Wheel | 2 |
| 46 | 18-119 | Wheel Spacer | 1 |
| 47 | 18-105 | Right Shaft Bracket..... | 1 |
| 58 | 31-2508SB | Shoulder Bolt | 2 |
| 72 | 18-130A | Handle End Plug | 2 |
| 73 | 18-165A | Rod End Bearing Assembly..... | 1 |
| 74 | 18-127A | Set Collar | 2 |
| 75 | 25-20ESNA | Nut | 1 |
| 76 | 18-131 | Oil Drain Tube | 1 |
| 77 | 18-132 | Oil Drain Cap..... | 1 |

Thomsen Ice Edger Rear Axles Assembly



| Item No. | Part No. | Description | No. Req'd |
|----------|-----------|----------------------------------|-----------|
| 85 | 18-505 | Gas Line Cap | 1 |
| 86 | 18-152 | LP Gas Filter..... | 1 |
| 87 | 18-510 | Hose Adaptor | 1 |
| 88 | 18-150 | Hose Inlet | 1 |
| 89 | 18-515 | Hose Adaptor | 1 |
| 90 | 18-155 | Quick Connect Fitting..... | 1 |
| 91 | 18-147 | Quick Release Knob | 1 |
| 92 | 18-149 | Tank Bracket (Top) | 1 |
| 93 | 18-149-01 | Tank Spacer..... | 1 |
| 94 | 25-25CW | Washer..... | 1 |
| 95 | 25-2008BH | Button Hd. Screw..... | 1 |
| 96 | 10-3202FH | Flat Hd. Screw | 2 |
| 97 | 18-174 | Push Button Starter Switch..... | 1 |
| 98 | 18-177 | Push Button Mount Plate | 1 |
| 99 | 10-32ESNA | Nut | 2 |
| 100 | 18-146 | LP Tank (2.5 Gal.) | 1 |
| 101 | 18-153 | 90 Degree Outlet Fitting | 1 |
| 102 | 18-156 | Regulator..... | 1 |
| 103 | 25-25IL | Lock Washer | 2 |
| 104 | 25-2008BH | Button Hd. Screw..... | 2 |
| 105 | 25-2008HX | Hex Screw | 2 |
| 106 | 25-25CW | Washer..... | 2 |
| 107 | 18-179A | Vacuum Swtich | 1 |
| 108 | 18-520 | Vacuum Hose Fitting | 1 |
| 109 | 25-20ESNA | Nut | 2 |
| 110 | 25-25CW | Washer..... | 2 |
| 111 | 18-179C | Vacuum Switch Mount Bracket..... | 1 |
| 112 | 18-160 | Vacuum Hose | 1 |
| 113 | 18-525 | Vacuum Hose/ Idle Fitting | 1 |
| 114 | 18-151 | Hose Outlet | 1 |
| 115 | 18-530 | LP Spud..... | 1 |
| 116 | 18-535 | LP Power Adjust Screw | 1 |
| 117 | 18-540 | 90 Degree Inlet Fitting..... | 1 |
| 118 | 18-545 | Lockoff/ Regulator Adaptor..... | 1 |
| 119 | 18-179B | Fuel Lockoff Solenoid | 1 |
| 120 | 25-25CW | Washer..... | 2 |
| 121 | 10-2408BH | Button Hd. Screw..... | 2 |

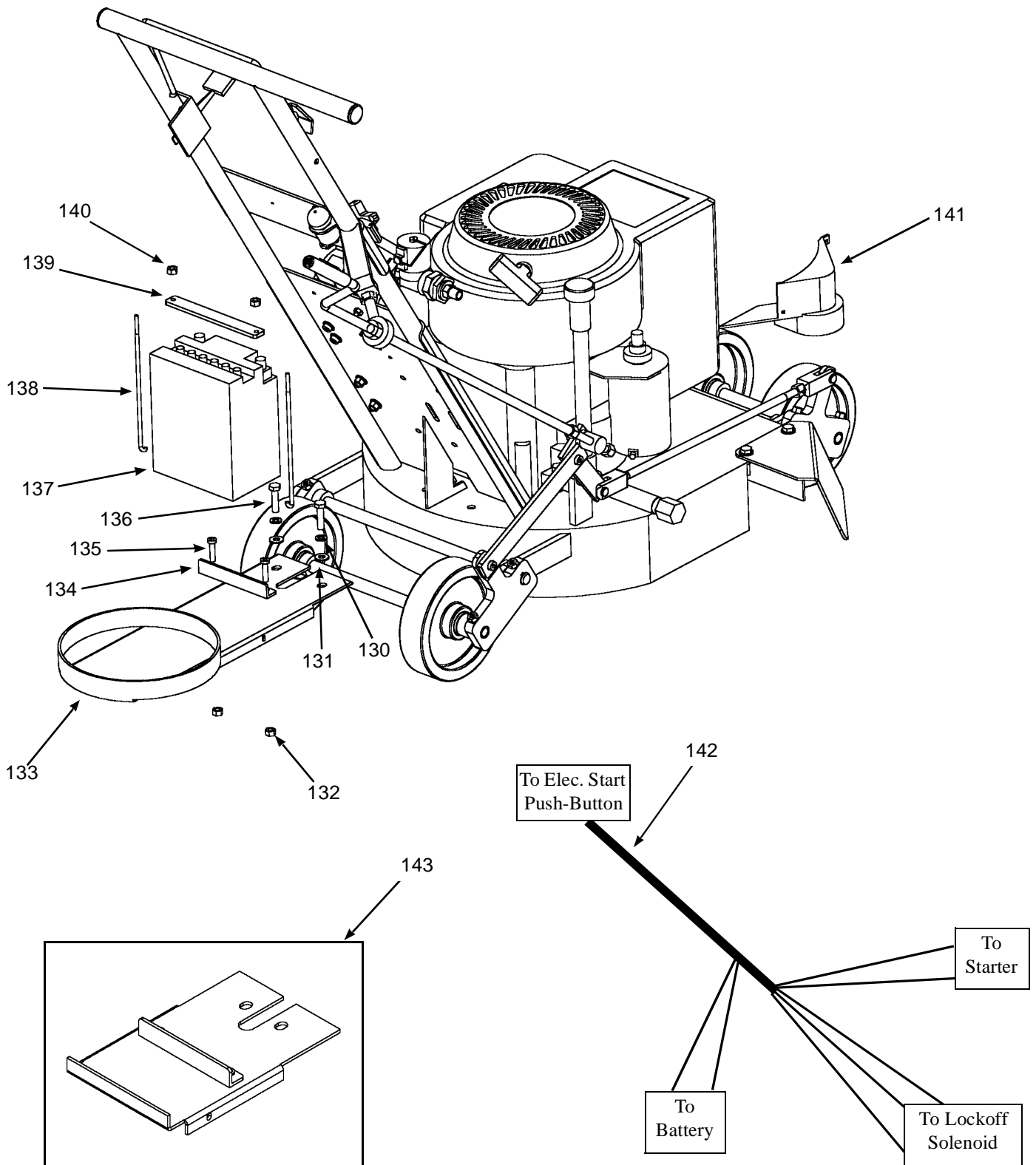
Thomsen Ice Edger LP Assembly



Use only genuine **Thomsen** replacement parts

| Item No. | Part No. | Description | No. Req'd |
|----------|-----------|---|-----------|
| 130 | 31-31IL | Lock-Washer | 2 |
| 131 | 31-31CW | Washer..... | 2 |
| 132 | 10-32ESNA | Nut | 2 |
| 133 | 18-148 | Tank Tray | 1 |
| 134 | 18-148-01 | Battery Holder..... | 1 |
| 135 | 10-3202FH | Flat Hd. Screw | 2 |
| 136 | 31-1810 | Bolt..... | 2 |
| 137 | 18-550 | 12 Volt Battery | 1 |
| 138 | 18-148-02 | Battery Tie Down Rod | 2 |
| 139 | 18-148-03 | Battery Hold Down Strap | 1 |
| 140 | 10-24ESNA | Nut | 2 |
| 141 | 18-170-01 | Electric Starter Cover..... | 1 |
| 142 | 18-555 | PRO-18ES Electric Start Wiring Harness..... | 1 |
| | 18-560 | T-18ES Electric Start Wiring Harness | 1 |
| 143 | 18-175 | Battery Tray (Gas Option) | 1 |

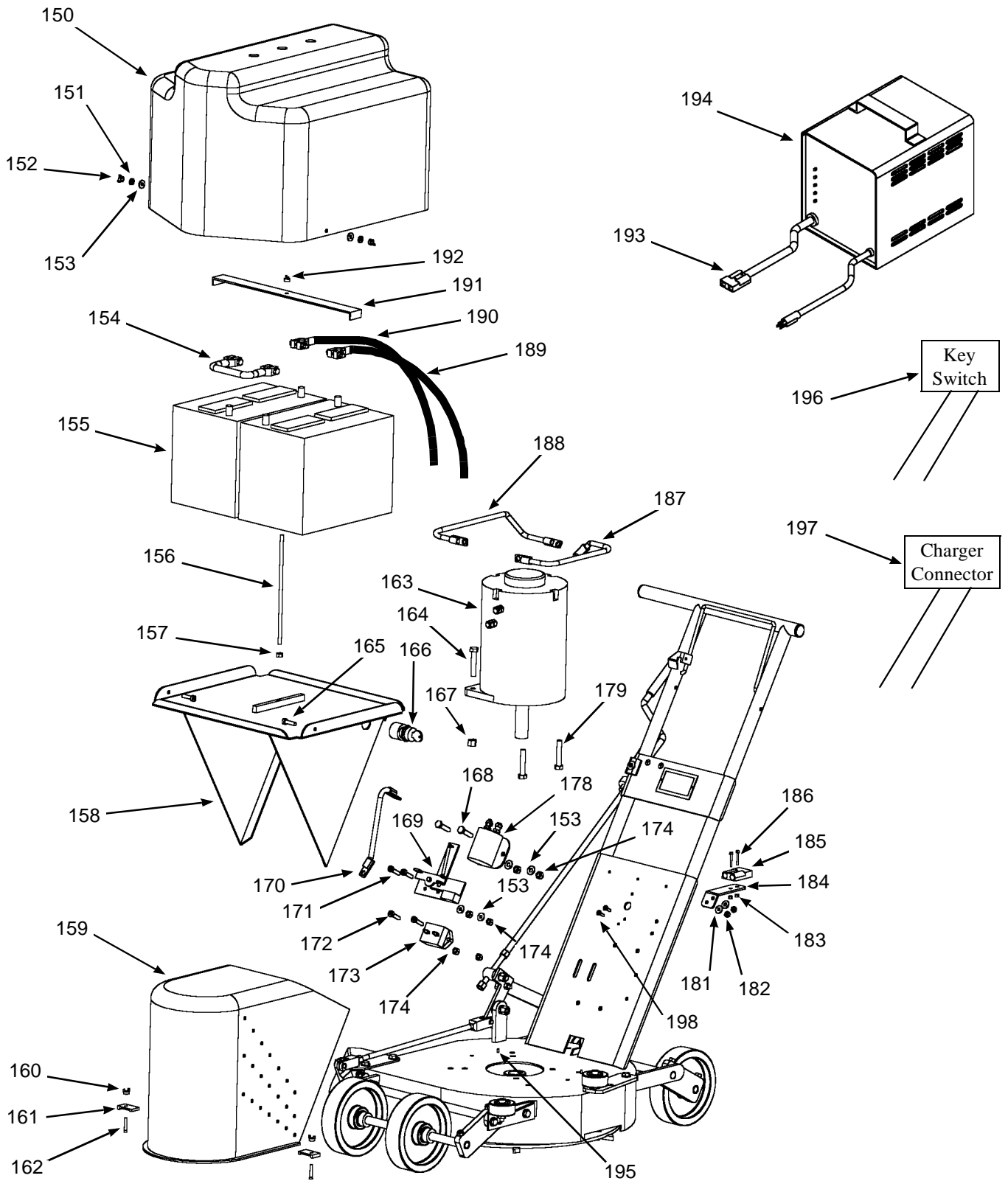
Thomsen Ice Edger Electric Start Assembly



Use only genuine **Thomsen** replacement parts

| Item No. | Part No. | Description | No. Req'd |
|----------|------------|----------------------------------|-----------|
| 150 | 29-115 | Fiberglass Battery Cover..... | 1 |
| 151 | 25-25IL | Lock Washer | 2 |
| 152 | 25-20WN | Wing Nut..... | 2 |
| 153 | 25-25CW | Flat Washer | 6 |
| 154 | 29-106-01 | Battery Jumper Wire | 1 |
| 155 | 29-130 | 12V Battery..... | 2 |
| 156 | 29-112 | Battery Tiedown Rod | 1 |
| 157 | 25-20FN | Flange Nut..... | 1 |
| 158 | 29-101 | Battery Tray | 1 |
| 159 | 29-114 | Fiberglass Motor Cover | 1 |
| 160 | 10-24WN | Wing Nut..... | 1 |
| 161 | 29-117 | Motor Cover Clamp | 2 |
| 162 | 10-2414SH | Cap Screw | 2 |
| 163 | 29-100 | Elec. Motor | 1 |
| 164 | 37-1624HX | Hex Screw | 2 |
| 165 | 25-2087BH | Button Hd. Screw..... | 2 |
| 166 | 25-105 | Key Switch..... | 1 |
| 167 | 37-16ESNA | Nut | 2 |
| 168 | 25-2012HX | Hex Screw | 2 |
| 169 | 18-166 | Ignition Shutdown Mechanism..... | 1 |
| 170 | 29-106-03 | Jumper Wire..... | 1 |
| 171 | 25-2087BH | Button Hd. Screw..... | 2 |
| 172 | 25-2012HX | Hex Screw | 2 |
| 173 | 29-118 | Breaker..... | 1 |
| 174 | 25-20ESNA | Nut | 6 |
| 178 | 29-103 | Solenoid | 1 |
| 179 | 31-2412HX | Hex Screw | 2 |
| 181 | 10-10CW | Flat Washer | 2 |
| 182 | 10-24ESNA | Nut | 2 |
| 183 | 06-32ESNA | Nut | 2 |
| 184 | 29-113 | Connector Bracket -Rec..... | 1 |
| 185 | 29-111 | Charger Quick Connector | 1 |
| 186 | 06-3214SH | Cap Screw | 2 |
| 187 | 29-106-04 | Jumper Wire..... | 1 |
| 188 | 29-106-02 | 8" Jumper Wire | 1 |
| | 29-106-02A | 4" Jumper Wire | 1 |
| 189 | 29-106-05 | Battery Cable | 1 |
| 190 | 29-106-06 | Battery Cable | 1 |
| 191 | 29-102 | Battery Strap | 1 |
| 192 | 25-20WN | Wing Nut..... | 1 |
| 193 | 29-111 | Charger Quick Connector | 1 |
| 194 | 29-110 | Charger..... | 1 |
| 195 | 12-50RP | Roll Pin | 2 |
| 196 | 29-108 | Micro Wires | 2 |
| 197 | 29-109 | Charger Wires | 2 |
| 198 | 10-2414SH | Cap Screw | 2 |

Thomsen Ice Edger Elec. Assembly



Use only genuine **Thomsen** replacement parts

| Item No. | Part No. | Description | No. Req'd |
|----------|-----------|----------------------------|-----------|
| 205 | 31-24ESNA | Nut | 6 |
| 206 | 18-115 | Hub..... | 1 |
| 207 | 43-43IL | Lock Washer | 1 |
| 208 | 25-2808HT | Hex Screw | 12 |
| 209 | 25-25IL | Lock Washer | 12 |
| 210 | 90-151 | Cutter Blade | 6 |
| 211 | 31-2420SF | SH Screw | 4 |
| 212 | 29-119 | Cutter Disc | 1 |
| 213 | 43-2020HX | Hex Screw | 1 |
| 214 | 31-2416SC | Socket Hd. Cap Screw | 2 |
| 215 | 19-121 | Hub Spacer..... | 2 |
| 216 | 25-2808SS | Set Screw | 2 |
| 217 | 25-28JN | Nut | 2 |
| 218 | 18-116 | Key..... | 1 |

Thomsen Ice Edger Elec. Cutter Disc Assembly

